

Temporary Trash Schedule

Effective 3/30/20

To support public health and safety of residents and employees, as well as further promote social distancing of Town employees, **the Town of Cheverly will be temporarily changing trash collection to ONCE per week. Bulk trash pick-up is temporarily suspended until further notice.** Yard waste and recycling collection will continue as regularly scheduled at this time. **Please note that this change in service is being made to enhance the social distancing of Public Works employees. This is an attempt to protect employees and to allow for the continuation of sanitation collection services.**

Temporary Trash/Yard Waste/Recycling Schedule

Effective Monday, March 30, 2020 and Until Further Notice:

Monday	Tuesday	Wednesday	Last Thursday of the Month starting on 6/25	Friday
Trash Collection – East Side Yard Waste – Town-Wide	Trash Collection – West Side	Recycling Collection – Town-Wide	Town-Wide <ul style="list-style-type: none"> • Bulk Trash • 3 items or less 	No Services

The disease, COVID-19, has been declared a Global Pandemic. Both the State of Maryland and Prince George's County are operating under a State of Emergency. If you see a Town employee working, **please maintain at least a six (6) foot distance from them if you need to communicate with them.**

The Department of Public Works is focusing on trying to maintain the essential service of sanitation collection and protecting the employees who provide that service. **The department will maintain the schedule outlined above until further notice**, and for as long as the department can maintain crews for collection. Please understand that the department is working on a skeleton crew and **is unable to provide other services at this time.**

Please note that the following services are **temporarily suspended until further notice: bulk trash pick-up, appliance pick-up, mulch delivery, tree planting, recycling bin sales, rain barrel sales, compost bin sales, payments for past services**, and all other services provided by Public Works. During this time, the Department of Public Works may have limited hours for answering telephone calls.

Currently, all Town buildings, Town playgrounds, courts and fields are closed to the public. Parks and trails remain open for users who practice social distancing by maintaining a distance of six feet. **Thank you** for your understanding during these challenging times. **Please be safe, well, and practice social distancing.** It is **important** to visit the [Town's website](#) for future updates, and

share that information with **neighbors** and **friends** who do not have internet. **Future updates may not be able to be provided by flyers to single family homes.**

Trash & Recycling



Regular schedule

Containers not to exceed thirty-two (32) gallon capacity with a tight-fitting lid.

Trash must be out to the curb prior to 7:00 am on your pickup day.

- East side of town is on Monday
- West side of town is on Tuesday

Back door pickup in the snow remember your sanitation worker when there is snow on the ground. Bring your cans to the curb so our workers won't have to trudge through the snow or ice to get your backdoor cans.

Holidays

If your regular trash collection day falls on a federally observed holiday you will not receive trash collection on that day. During that week you will have your trash pickup on ex. Monday holiday trash picked up on Thursday, Tuesday holiday trash picked up on Friday. Please note the trash route changes on the day after the holidays, so to be sure not to miss the collection, your trash must be at the curb prior to 7:00 am after a holiday.

Electronics recycling schedule

Collected every Wednesday after regular recycling. Place any electronic equipment out next to the recycling bin for pickup.

This includes tv's any size, computers, printers, etc. If a federally observed holiday falls on a Wednesday, recycling will occur on the following day (Thursday)

Yard waste

Collected every Monday only

Tree limbs and brush must be cut 4 feet in length and tied up or put in a trash can for easy handling by the public works employees. Tree limbs not to exceed 4 inches in diameter.

Dirt is not acceptable.

Bamboo is not acceptable on Monday's collection. Put bamboo out (cut in 4' length, tied up) with bulk trash on Last Thursday of the Month. One bundle counts as one item.

No stumps or logs.

No landscape ties.

Leaves and grass trimmings should be placed in paper bags or trash containers (labeled as Yard waste).

All loose materials must be placed in containers and not exceed 50 pounds. We do not take the dirt.

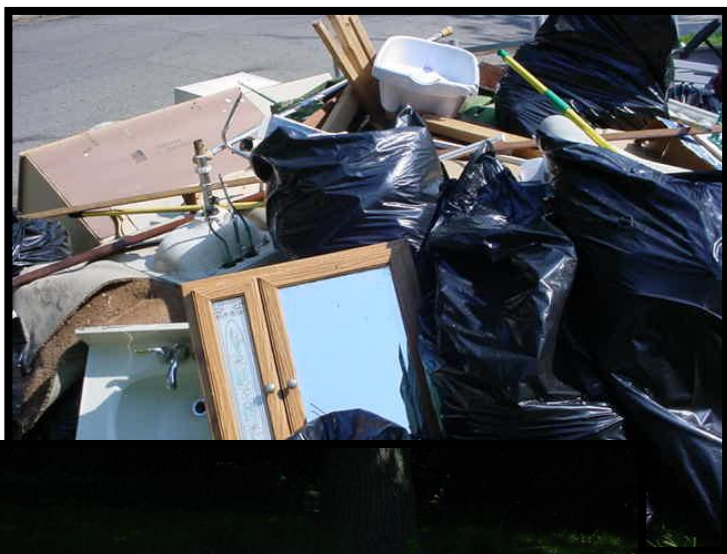
Yard waste should not be placed out before 5:00pm on Sunday.

If the crew does not finish collecting yard waste on Monday, they will complete the task on the following day. This does not mean you may put out more yard waste if they have cleared your street the prior day.

Special trash collection Town wide on last Thursday of each Month starting on 6/25/2020

- Special trash collection is for large/bulky items: (old furniture, rugs, lamps, odd junk, etc...)
- Items must be placed at the curb before 7:00am the morning of your special trash day but not before 7:00pm on the night before.
- Up to three items are accepted on any given special collection day.
- Materials that will not be accepted: appliances (fee required), construction materials, auto parts (including tires), hazardous wastes (such as oils & paints), recyclable materials and yard waste.
- This does not include the total house clean out. See the pictures below. When a move out occurs, arrangements should be made for pickup. We will assess a fee for this type of pickup.
- Each household will be limited to three items.

This is an example of a clean out that is not acceptable. Prior arrangements should be made for pickup. A fee will be assessed. If no arrangements are made, the fee and fine will be assessed and if not paid, the property will be lined.



pick up

This is an example of bulk trash that is collected on last Thursday of the Month.

This is an example of bulk trash that is collected on last Thursday of the Month.

Recycling & electronics

Recycling pickups are every Wednesday. You can now combine your recyclables. Use either blue or yellow bins to place plastic, paper, glass, newspaper, and cardboard together for collection on Wednesday. There is no need to separate these items.

However, do set your electronic items out to the side. If a federally observed holiday falls on a Wednesday, recycling will occur on the following day (Thursday). Batteries are not

acceptable, they must be taken to the brown station landfill, Thursday, Friday, or Saturday (hazardous waste days)



Appliance pick-ups

Consists of washers, dryers, stoves, refrigerators, air conditioners (any size), water heaters, and microwaves (any size).

You will have to pay a fee for the removal, \$20 for the first and \$10 for each additional. We will send you an invoice in the mail. Once the invoice is received, please mail us a check made out to "Town of Cheverly." For further information call 301-773-2666.

Hazardous waste

In addition to prescription medication disposal available at the Cheverly police station, Prince George's County offers free hazardous waste disposal at the brown station landfill in Upper Marlboro.

For complete information regarding the county's waste management and hazardous waste disposal programs, visit their [website](#).